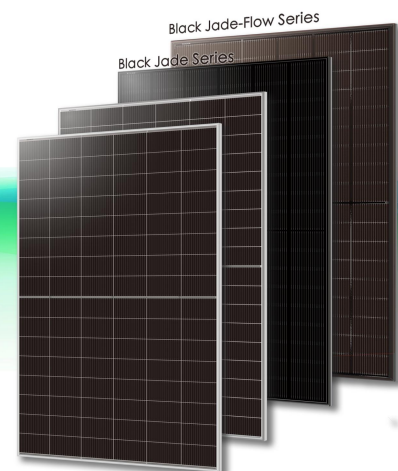


**Double Glass, Bifacial**

Wattage : **440-460Wp** Efficiency(max) : **23.02%**  
Dimensions : **1762\*1134\*30mm**



**Model:**  
UL-440-460M-96DDGN  
UL-440-460M-108BDGN

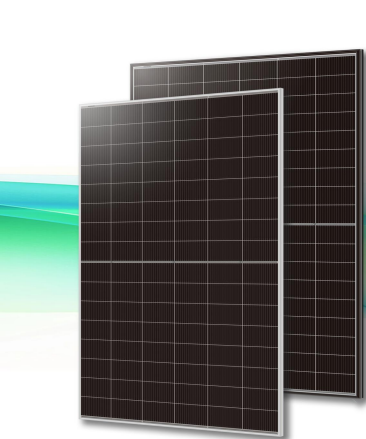
**Connector:**  
Stäubli MC4-EVO2(Special for Black Jade Series)

**Weight:**  
24 kg

**Per Pallet / Container:**  
36 / 936 pcs

**Single Glass, Monofacial**

Wattage : **445-460Wp** Efficiency(max) : **23.02%**  
Dimensions : **1762\*1134\*30mm**



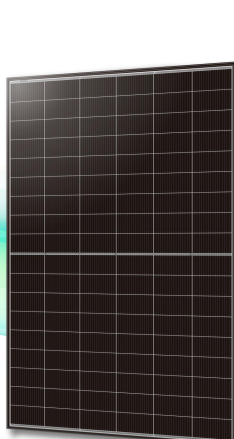
**Model:**  
UL-445-460M-96DHVN  
UL-445-460M-108BHVN

**Weight:**  
21 kg

**Per Pallet / Container:**  
36 / 936 pcs

**Single Glass, Monofacial**

Wattage : **465-475Wp** Efficiency(max) : **23.27%**  
Dimensions : **1800\*1134\*30mm**



**Model:**  
UL-465-475M-108CHVN

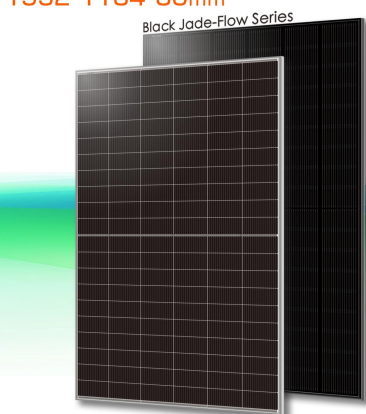
**Weight:**  
21.5 kg

**Per Pallet / Container:**  
36 / 936 pcs  
36 / 864 pcs(stock)

CATALOGUE N-Type TOPCon

**Double Glass, Bifacial**

Wattage : **495-505Wp** Efficiency(max) : **22.81%**  
Dimensions : **1961\*1134\*30mm**  
**1952\*1134\*30mm**



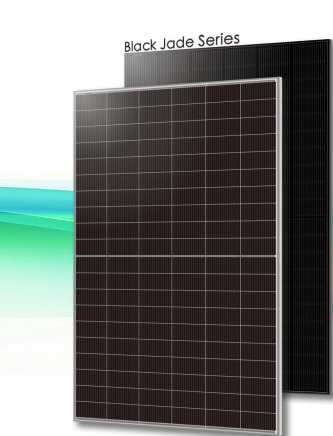
**Model:**  
UL-495-505M-108DDGN  
UL-495-505M-120BDGN

**Weight:**  
26.5 kg

**Per Pallet / Container:**  
36 / 864 pcs

**Single Glass, Monofacial**

Wattage : **495-505Wp** Efficiency(max) : **22.81%**  
Dimensions : **1952\*1134\*30mm**



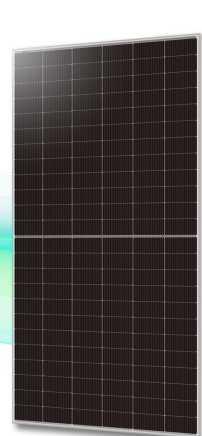
**Model:**  
UL-495-505M-120BHVN

**Weight:**  
22.5 kg

**Per Pallet / Container:**  
36 / 864 pcs

**Double Glass, Bifacial**

Wattage : **575-595Wp** Efficiency(max) : **23.03%**  
Dimensions : **2278\*1134\*30mm**



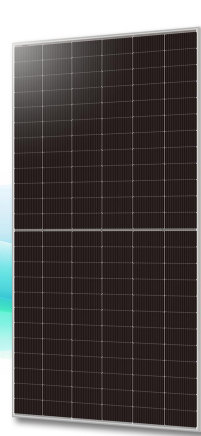
**Model:**  
UL-575-595M-144ADGN

**Weight:**  
30.6 kg

**Per Pallet / Container:**  
36 / 720 pcs

**Single Glass, Monofacial**

Wattage : **580-595Wp** Efficiency(max) : **23.03%**  
Dimensions : **2278\*1134\*30mm**



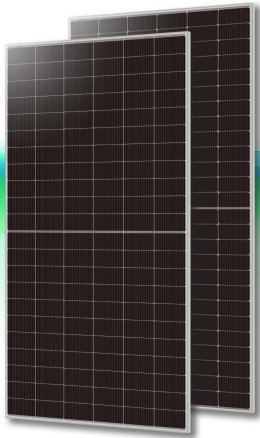
**Model:**  
UL-580-595M-144AHVN

**Weight:**  
26 kg

**Per Pallet / Container:**  
36 / 720 pcs

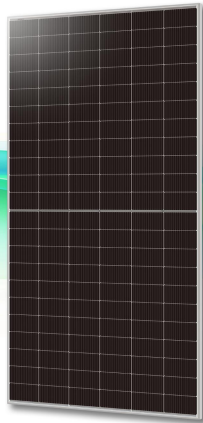
Double Glass, Bifacial

Wattage : **600-625Wp** Efficiency(max) : **23.14%**  
 Dimensions : **2382\*1134\*30mm**



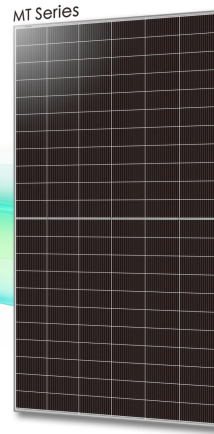
Single Glass, Monofacial

Wattage : **605-625Wp** Efficiency(max) : **23.14%**  
 Dimensions : **2382\*1134\*33mm**



Double Glass, Bifacial

Wattage : **700-725Wp** Efficiency(max) : **23.34%**  
 Dimensions : **2384\*1303\*33mm**



Model: UL-600-625M-132DDGN

Weight: 32 kg

Per Pallet / Container: 36 / 720 pcs

Model: UL-605-625M-132CHVN

Weight: 27.8 kg

Per Pallet / Container: 31 / 620 pcs

Model: UL-700-725M-132DDGN

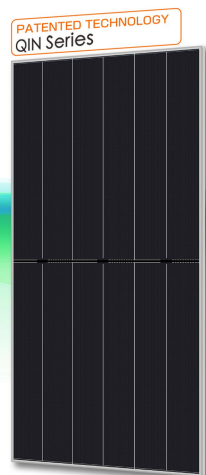
Weight: 37.1 kg

Per Pallet / Container: 33 / 594 pcs

CATALOGUE N-Type TOPCon 5.0+Ultimate OBB (Stacked Finger Tech Preview)

Double Glass, Bifacial

Wattage : **635-660Wp** Efficiency(max) : **24.43%**  
 Dimensions : **2382\*1134\*30mm**



Model: UL-635-660M-144CDGN

Weight: 32 kg

Per Pallet / Container: 36 / 720 pcs